

What you need:

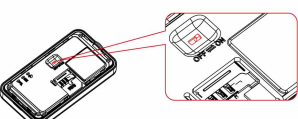


Note: The SIM card should have access to GPRS + SMS+ Caller, monthly data around 30MB with the GPS interval time 10-60s correspondingly.

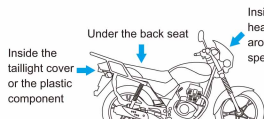
Operation



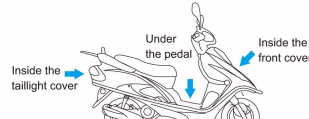
Insert the SIM card



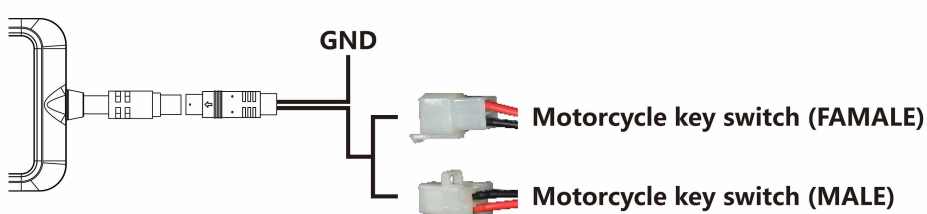
Toggle the battery switch to ON



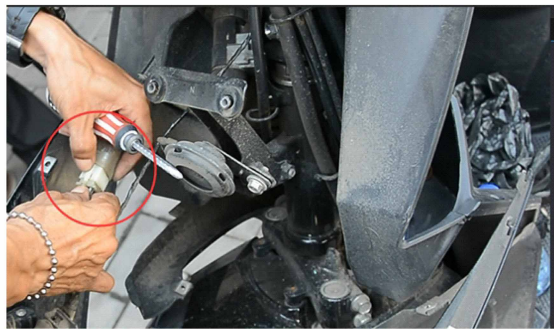
Use double-side tape and cable to fix MOPLUS (Face indicators up to sky) on the motorcycle



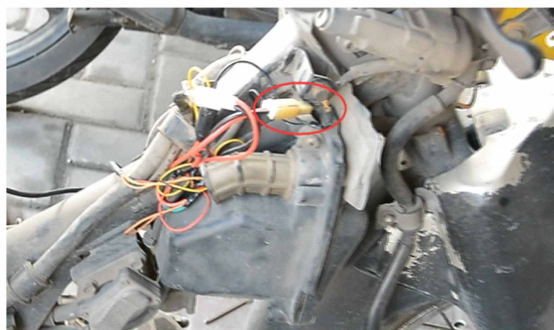
Wiring Instruction



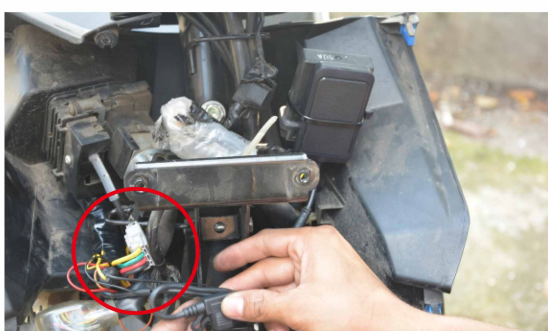
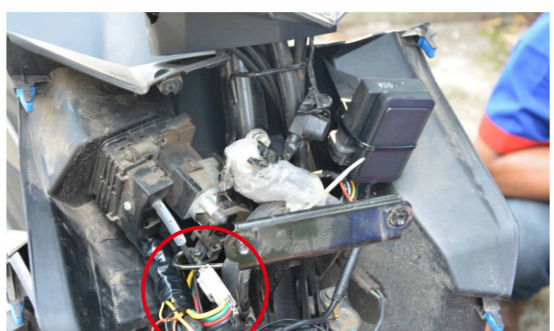
Honda Beat



Yamaha Vega



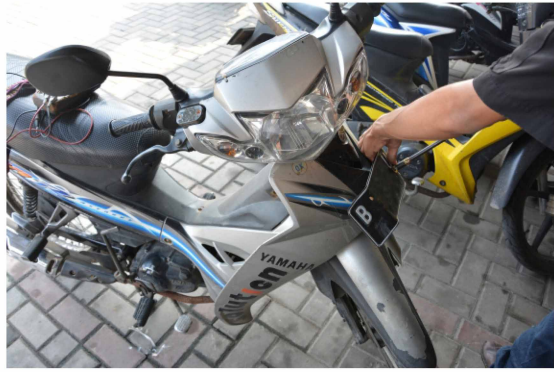
Honda Vario



For other motor series, usually the key switch connector could be found in the same or similar position .

Installation

Here we will go with Yamaha motor and install inside the front cover:

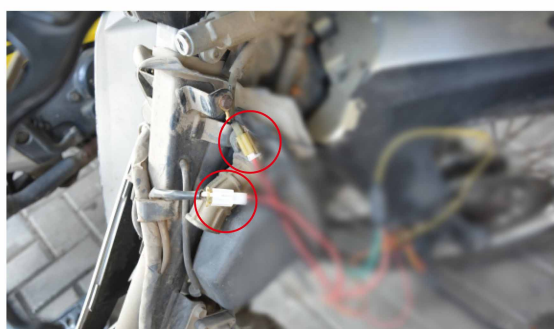


A.Please find the Motorcycle Key Switch Connector as picture show :(Note :connector position depends on the motor series)

B.Disconnect the female socket and male plug:



C.Connect the device power cable to the motorcycle (see the following picture)



Fixed the tracker



After all done, please check the LED indicators in open air. When the device is working

- a)the red power indicator and the green GSM indicator should be slow flashing.
- b)the blue GPS indicator should be normally on (solid bright).

Blue LED	●	GPS Signal
Green Led	●	GSM Signal

For remote immobilization,SOS & Center number are required to be set in advance. When the driving speed is less than 20km/h,command will be activated.

- A . Add SOS number command: **SOS,A,number 1,number 2,number 3#**
- B. Set center number command: **Center,A,phone number#(center number should be set up by SOS number)**
- C. Cutoff command : **Relay,n# (n=0: connection, n=1: cut off; default: 0.)**

Log in tracking platform with user name and password

Web : WWW.Intai.id
App (IOS & Android): **INTAI**